

# A.R.M. The Great Moodle Update

Or..

Any sufficiently advanced rollover of Moodle is indistinguishable from magic.



GRIFFITH COLLEGE

# THE LANDSCAPE

FACULTIES

STAFF TIERS

AIMING TO UPGRADE  
AESTHETIC & PERFORMANCE

# THE LANDSCAPE

FACULTIES

STAFF TIERS

AIMING TO UPGRADE  
AESTHETIC & PERFORMANCE

Over 7000 Students

4 Campuses

100s of lecturers and staff.

Planning from  
Dec. 2017

# THE CHALLENGE

CULTURE CHANGE

GETTING GDPR READY

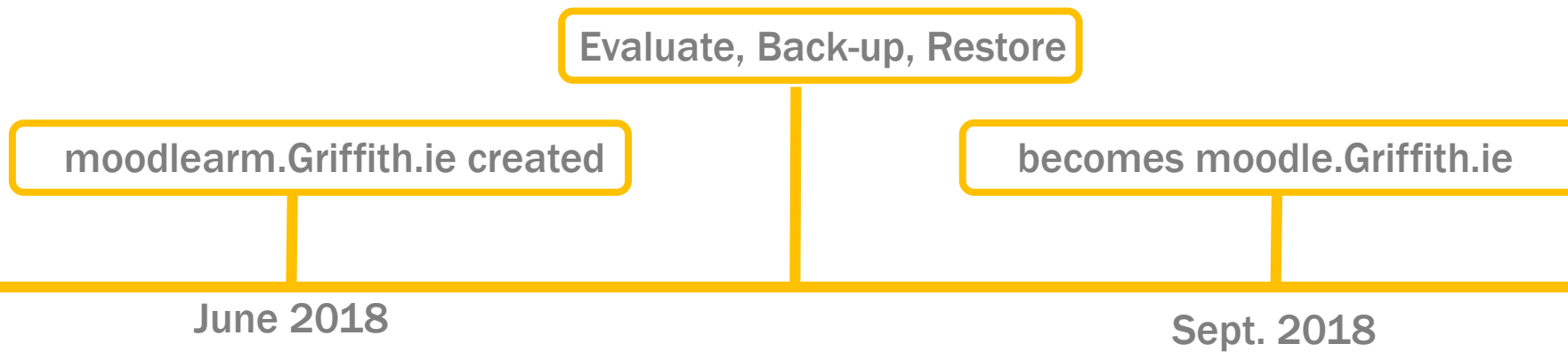
CONTENT EVALUATION

# STRATEGY

**A.R.M.**

Annual  
Rollover of  
Moodle


# STRATEGY




**A.R.M.**  
Annual  
Rollover of  
Moodle



# WHAT IS ANNUAL ROLLOVER OF MOODLE ?



This means a new blank course page is provided, where you can easily move over what you know that works, and add what you think needs to be updated.

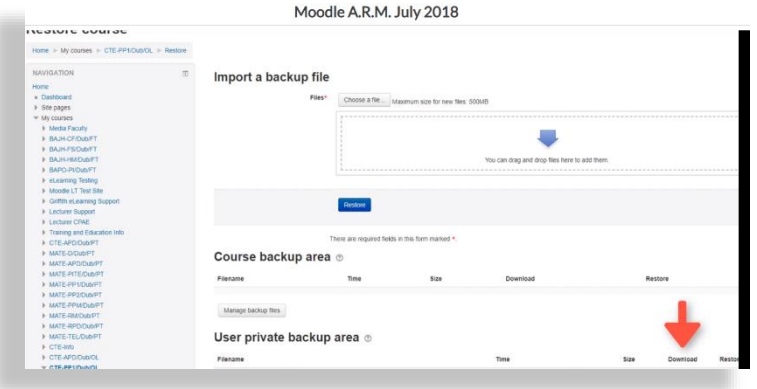
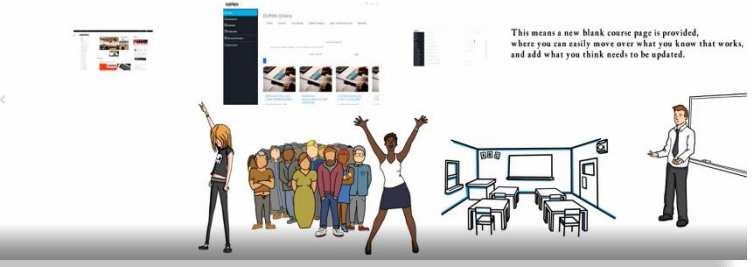


The complex block contains a screenshot of the Moodle LMS interface, a text box explaining the rollover process, and an illustration of a diverse group of students and a teacher in a classroom setting.

VIDEOS

# ALL OUT TRAINING CAMPAIGN

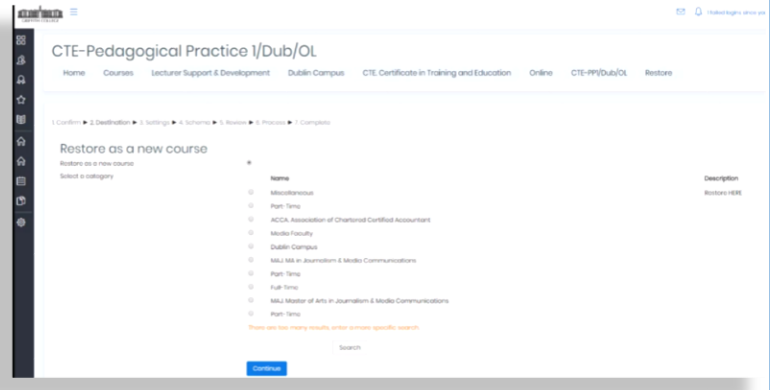
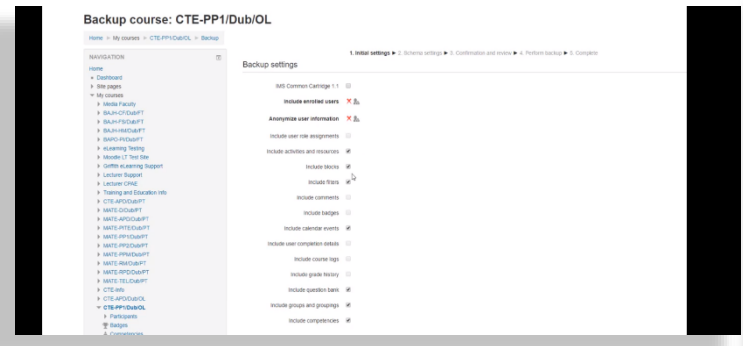
# WHAT IS ANNUAL ROLLOVER OF MOODLE ?



## VIDEOS

## OUTLINE OF THE A.R.M. PROCESS

## STEP-BY-STEP INSTRUCTION



# ALL OUT TRAINING CAMPAIGN





# WHAT IS ANNUAL ROLLOVER OF MOODLE ?



This means a new blank course page is provided, where you can easily move over what you know that works, and add what you think needs to be updated.



VIDEOS

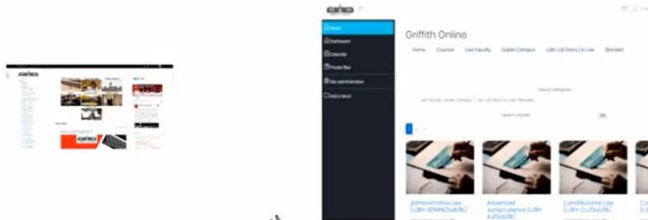
CONCERTED MESSAGING FROM  
I.T. AND ED-TECH

WORKSHOPS

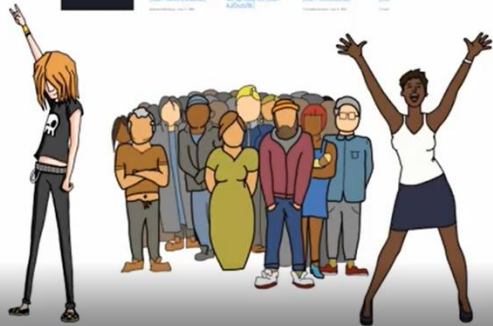
# ALL OUT TRAINING CAMPAIGN



# WHAT IS ANNUAL ROLLOVER OF MOODLE ?



This means a new blank course page is provided, where you can easily move over what you know that works, and add what you think needs to be updated.



FACULTY MESSAGING

DROP-IN CLINICS

“HOUSE-TO-HOUSE”

# ALL OUT TRAINING CAMPAIGN

# Upgrade from Moodle 3.2 Moove theme running Moodle 3.4

The screenshot displays the Moodle course interface for 'Griffith eLearning Support'. The page features a top navigation bar with 'Home', 'Courses', 'Lecturer Support & Development', and 'Griffith eLearning Support'. A central banner reads 'WELCOME TO GRIFFITH ELEARING SUPPORT'. The main content area is a grid of eight tiles, each with a 'View' button:

- Moodle Tutorials**: A new Moodle and essential video Lessons. Includes a thumbnail of the Moodle interface.
- Assessment Information**: Managing Assessments and submissions. Includes a thumbnail of hands writing on a notepad.
- Creating Online Lectures**: Screencasting with Camtasia. Includes a thumbnail of a computer monitor with the Camtasia logo.
- Zoom Webinars**: Setting-up Your Online Classroom. Includes a thumbnail of a Zoom meeting grid.
- Instructional Documentation**: Setting-up Your Online Classroom. Includes a circular diagram with steps: Analyse, Design, Develop, Implement, Evaluate.
- Useful Apps**: The Latest learning tools. Includes a thumbnail of a mobile app interface.
- Useful resources**: Teaching Tools. Includes a thumbnail of a person at a computer with a speaker icon.
- Copyright & Referencing**. Includes a thumbnail of silhouettes of people.

On the right side, there is a 'COURSE SUMMARY' section with an introduction to Moodle, an 'SMS MANAGER' section for sending SMS to the course, and an 'ADMINISTRATION' section with a list of settings: Course administration, Edit settings, Turn editing on, Course completion, Users, Filters, Reports, Gradebook setup, Badges, Backup, Restore, Import, Reset, Question bank, and Legacy course files.

# MORE TECH

We introduced these technologies,  
sitting on our live Moodle.

# MORE TECH



We introduced these technologies,  
sitting on our live Moodle.

***“THE CLOSER WE GOT TO SEPTEMBER,  
THE MORE WE THOUGHT THE LAST  
MINUTE SCRAMBLE SCENARIO  
WOULD ARRIVE.”***

*“THE CLOSER WE GOT TO SEPTEMBER,  
THE MORE WE THOUGHT THE LAST  
MINUTE SCRAMBLE SCENARIO  
WOULD ARRIVE.”*







**11<sup>th</sup> HOUR PANIC!**






*THE NIGHTMARE:*

*EVERYONE BACKING-  
UP AND RESTORING  
GIGS-WORTH OF DATA  
OVER ONE WEEKEND*

*GULP..*

**11<sup>th</sup> HOUR PANIC!**



**Everything  
was fine.  
The transition  
smooth.**

MOST LECTURERS RESTORED COURSES  
OVER A TWO WEEK PERIOD – STAGGERED

NOT THE NIGHT BEFORE DAY 1,  
SEMESTER 1

THE SYSTEM DIDN'T GRIND TO A HALT

TRAINING WAS A SUCCESS

**Everything  
was fine.  
The transition  
smooth.**

THANKS FOR  
YOUR TIME

***FIN***

