



# Image attribution helpers

**Rapidly find, attribute, integrate, download & layout free images into your Moodle design.**

**Greg Bird, Christine Nicholas, Regional TAFE Alliance (RTA)**

# Regional TAFE Alliance project

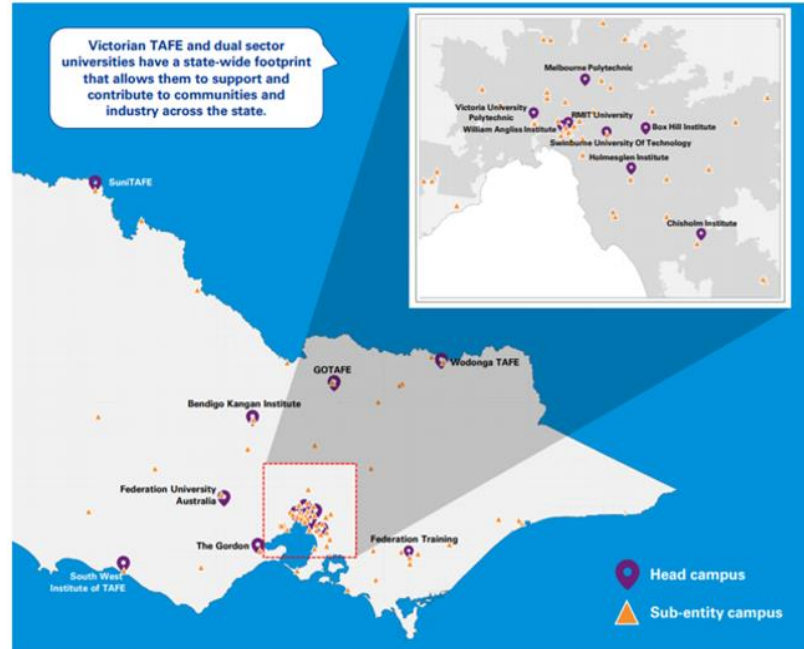




Photo by [Brooke Cagle](#) on [Unsplash](#)



Image by [Peggy und Marco Lachmann-Anke](#) from [Pixabay](#)

## Unsplash image embedder & attribution maker

A Bookmarklet to create HTML snippets to embed Unsplash images with proper attribution. These can be pasted into any HTML editor.

[First time? Click here for setup instructions.](#)

### Float Right (Image to the right of text)

Image will occupy 30% of the available space, between the minimum width of 200px and maximum width of 360px

[Copy embed code](#)

[Download small image](#)



Photo by @brookecagle on Unsplash, accessed 30/06/2019



### Float Left (Image to the left of text)

Image will occupy 30% of the available space, between the minimum width of 200px and maximum width of 360px

[Copy embed code](#)

[Download small image](#)

Photo by @brookecagle on Unsplash, accessed 30/06/2019

### Centered (Image above or below text)

Image will occupy 60% of the available space, aligned to the center of the container.

[Copy embed code](#)

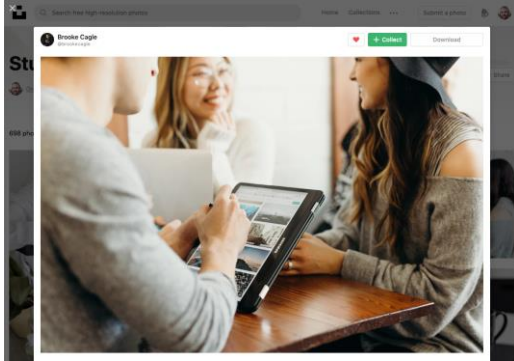
[Download medium image](#)



Photo by @brookecagle on Unsplash, accessed 30/06/2019

- ✓ Responsive
- ✓ Accessible
- ✓ Rapid
- ✓ Standards compliant
- ✓ Layout options

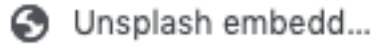
# 1. Find



# 4. Paste

```
Content
1 i B U L
2 <!-- Start of Unsplash Embed Code - Float Right (Embed code by @BirdyOz)-->
3 <div class="float-right" style="float: right; width: 30%; max-width: 320px;
4 min-width: 200px; margin: 0 10px 20px 10px;">
5 
9 <div class="text-muted" style="opacity: 0.5">
10 <small><a href="https://unsplash.com/photos/w475s9zhD41"
11 target="_blank">Photo</a> by <a href="https://unsplash.com/@brookecagle"
12 target="_blank">@brookecagle</a> on <a href="https://unsplash.com"
13 target="_blank">Unsplash</a>, accessed 17/06/2019</small>
14 </div>
15 </div>
16 <!-- End of Unsplash Embed Code -->
```

# 2. Click



# 5. Done\*

## 3. Introduction to human anatomy

To recognise healthy body systems, we must first understand the basic make-up of human body.

Anatomy describes the structure and shape of the body and its parts. It describes the structure of cells, tissues, organs and organisms.

Physiology describes how the body and its parts work or function. It relates the anatomical features to their role in good health.

Homeostasis is the process that all living things use to actively maintain the stable conditions necessary for survival, such as body temperature and blood pressure.

# 3. Copy

## Float Right (Image to the right of text)

Image will occupy 30% of the available space, between the minimum width of 200px and maximum width of 320px

Done! Embed code copied to clipboard



Photo by @brookecagle on Unsplash, accessed 17/06/2019



## Float Left (Image to the left of text)

Image will occupy 30% of the available space, between the minimum width of 200px and maximum width of 320px

Copy embed code

Photo by @brookecagle on Unsplash, accessed 17/06/2019



Photo by @brookecagle on Unsplash, accessed 17/06/2019

\* To ensure that you retain a copy of the image, we suggest you download the image and re-upload to Moodle

# Unsplash

@BirdyOz: Unsplash embedder & attribution maker [Float Right](#) [Float Left](#) [Centered](#) [Full-screen](#) [Text Overlay](#)

## Unsplash image embedder & attribution maker

A Bookmarklet to create HTML snippets to embed Unsplash images with proper attribution. These can be pasted into any HTML editor.

[First time? Click here for setup instructions.](#)

### Float Right (Image to the right of text)

Image will occupy 30% of the available space, between the minimum width of 200px and maximum width of 320px

[Copy embed code](#)



Image by @BANKIMON on Unsplash, accessed 11/06/2019



Photo by @BANKIMON on Unsplash, accessed 11/06/2019

### Float Left (Image to the left of text)

Image will occupy 30% of the available space, between the minimum width of 200px and maximum width of 320px

[Copy embed code](#)

### Centered (Image above or below text)

Image will occupy 60% of the available space, aligned to the center of the container.

[Copy embed code](#)



Photo by @BANKIMON on Unsplash, accessed 11/06/2019

[https://birdyoz.github.io/helpers/unsplash\\_embed.html](https://birdyoz.github.io/helpers/unsplash_embed.html)

# Pixabay

@BirdyOz: Pixabay attribution maker [Float Right](#) [Float Left](#) [Centered](#) [Full-screen](#) [Text Overlay](#)

## Pixabay attribution maker.

A Bookmarklet to create HTML snippets to create Pixabay attributions and properly align these statements with the image. These can be pasted into any HTML editor.

[First time? Click here for setup instructions.](#)

### Float Right (Image to the right of text)

Image will occupy 30% of the available space, between the minimum width of 200px and maximum width of 320px

[Copy embed code](#)



Image by JUAN FERNANDO VECKLE from Pixabay, accessed 11/06/2019



### Float Left (Image to the left of text)

Image will occupy 30% of the available space, between the minimum width of 200px and maximum width of 320px

[Copy embed code](#)

Image by JUAN FERNANDO VECKLE from Pixabay, accessed 11/06/2019

### Centered (Image above or below text)

Image will occupy 60% of the available space, aligned to the center of the container.

[Copy embed code](#)



[https://birdyoz.github.io/helpers/pixabay\\_attribution\\_helper.html](https://birdyoz.github.io/helpers/pixabay_attribution_helper.html)

# Shutterstock \*

@BirdyOz: Shutterstock attribution maker [Float Right](#) [Float Left](#) [Centered](#) [Full-screen](#) [Text Overlay](#)

## Shutterstock attribution maker

A Bookmarklet to create HTML snippets to create Shutterstock attributions and properly align these statements with the image. These can be pasted into any HTML editor.

[First time? Click here for setup instructions.](#)

Note: The images below act as placeholders ONLY, designed to achieve layout and attribution. They are to be replaced by a properly purchased and licenced version of the same image.

### Float Right (Image to the right of text)

Image will occupy 30% of the available space, between the minimum width of 200px and maximum width of 320px

[Copy embed code](#)



Image 128121183 used under license with Shutterstock.com by @BANKIMON, accessed 11/06/2019



Image 128121183 used under license with Shutterstock.com by @BANKIMON, accessed 11/06/2019

### Float Left (Image to the left of text)

Image will occupy 30% of the available space, between the minimum width of 200px and maximum width of 320px

[Copy embed code](#)

### Centered (Image above or below text)

Image will occupy 60% of the available space, aligned to the center of the container.

[Copy embed code](#)



Image 128121183 used under license with Shutterstock.com by @BANKIMON, accessed 11/06/2019

[https://birdyoz.github.io/helpers/shutterstock\\_attribution\\_helper.html](https://birdyoz.github.io/helpers/shutterstock_attribution_helper.html)



\* Shutterstock requires a commercial licence. Placeholder images need to be replaced with a properly purchased and licenced version of the image.

# You might also like .....

@BirdyOz: Re-usable UI elements fancy quote Boxes Alerts Interactive elements Tables Card Groups Modals Attribution

## Re-usable UI elements for Moodle (& elsewhere)

The following UI elements can be used to decorate your Moodle contents and create interactivity, all within the Moodle editor.

They use a combination of Bootstrap and FontAwesome. These are both 'baked in to Moodle' so it makes editing a breeze

### Fancy blockquotes

“ Insert quote here ”

— Insert citation here

Copy code

### Boxes

Think  
Insert content here

Copy code

Read  
Insert content here

Copy code

Discuss  
Insert content here

Copy code

<https://birdyoz.github.io/helpers/ui-elements.html>

@BirdyOz: Youtube Embedder

## YouTube responsive video embedder

A Bookmarklet to create HTML snippets to embed a YouTube video. These can be pasted into any HTML editor, such as the ATTO editor in Moodle

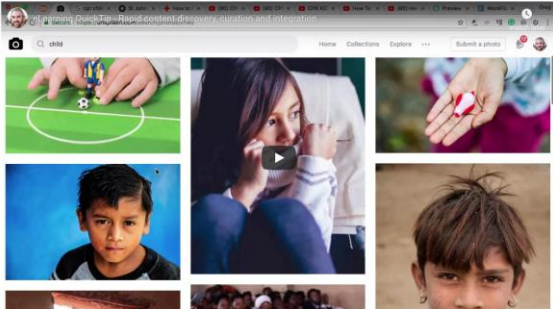
Videos are fully responsive (scale to 100% of the container). 'Video box' is pre-populated with title, playtime, description and aspect ratio

First time? [Click here for setup instructions.](#)

Copy embed code Include the YouTube description

eLearning QuickTip - Rapid content discovery, curation and integration (11:58)

This tutorial provides a range of strategies and browser extensions to rapidly discover, curate, integrate and properly cite digital assets, as you develop your eLearning resources.



[https://birdyoz.github.io/helpers/youtube\\_embedder.html](https://birdyoz.github.io/helpers/youtube_embedder.html)



The Moodle logo is centered in the upper half of the image. It features a dark teal graduation cap icon positioned above the letter 'i' in the word 'moodle'. The word 'moodle' is rendered in a bold, lowercase, sans-serif font in a bright orange color. The background is a solid, dark teal color.

moodle

