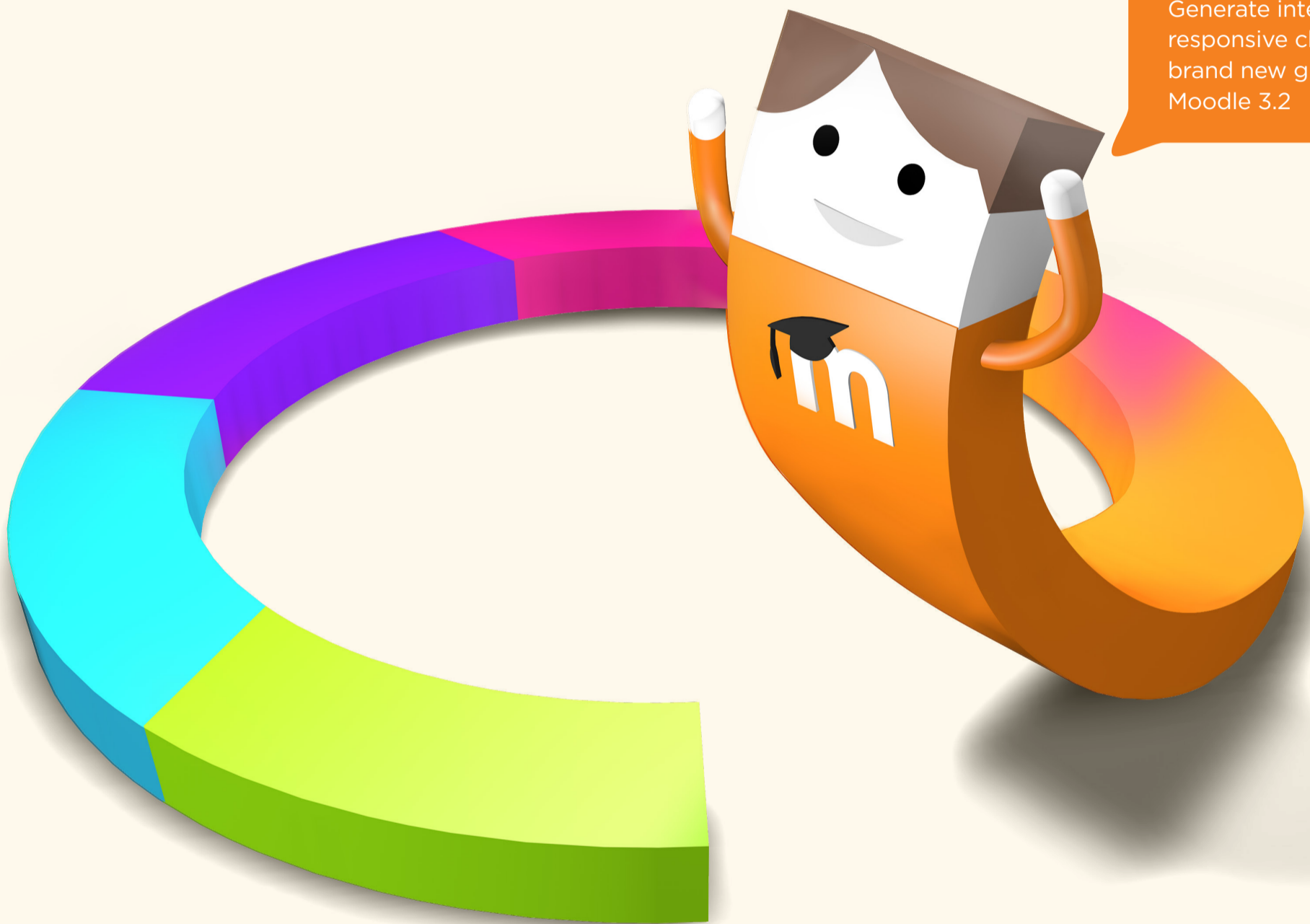


NEW GRAPHS ON ALL REPORTS

Generate interactive and responsive charts with a brand new graph library in Moodle 3.2



More features

A new modern graphing library in Moodle 3.2 has been used to overhaul all the graphs and charts to make them prettier as well as more interactive and responsive.

These include things like grades, choice results, attendance, surveys and other reports.

Here are some of the exciting things you might want to know about your brand new graph library.



A bit about Chart.js

Chart.js has been chosen for the next generation graph API backend because of its clean-cut aesthetics and responsive scaling to screen size.



Improving accessibility

To improve accessibility, there is now the option of viewing graph information in a direct table format and the default graph colours have also been chosen for the best possible contrast.

To see how the new graphs feature in Moodle 3.2 works, check out our step by step video at youtube.com/moodle