

ACTIVITIES IMPROVEMENTS

There are a number of improvements to **activities** in **Moodle 3.2** to help you get things done!



More features



Assignment

Teachers can now override assignment dates for individual students or groups. This tool is particularly useful when students require an extension on an assignment.



Forum discussion locking

In forums, you can now lock old forum discussions to stop further replies on them.

When a student attempts to access a locked forum they will be presented with a message informing them that the discussion has been locked and they can't

reply. Teachers and administrators are encouraged to notify their learners when a discussion is locked, through the forum description.



Choice

Teachers can now make selections for students in the Choice activity.

A teacher can make the same selection for multiple students or do this one at a time for each student.

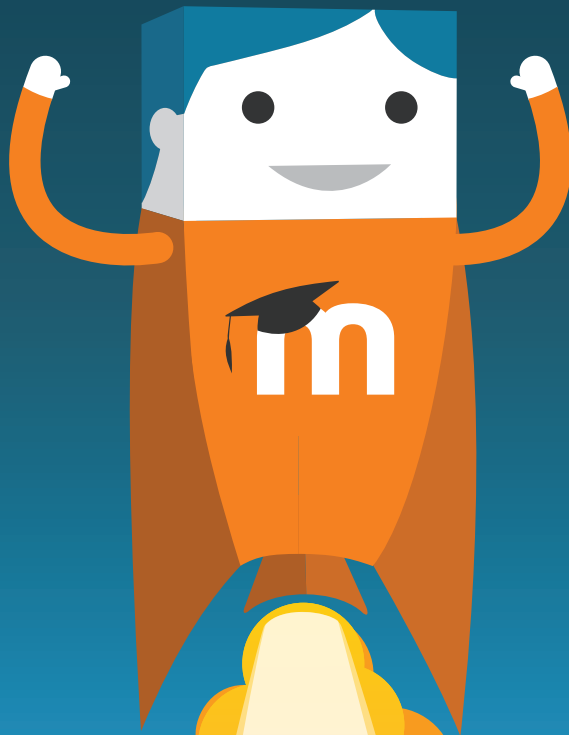


Exporting workshop activities to portfolio

Workshop activities can now be exported direct into an attached portfolio.

To see how the new improvements in activities work in Moodle 3.2, check out our step by step video at youtube.com/moodle

moodle 3.2



Boost is a new core theme that gives Moodle sites a **fresh new look**.

Try it for yourself
QA cycle test link:
<https://qa.moodle.net/>

LOGIN:
PASSWORD:

BOOST YOUR MOODLE

WITH THE NEW CORE THEME

Boost theme

Boost is a new core theme that gives Moodle sites a fresh new look.

Here are a few new things about Boost to enhance your learning environments:



More space for your content

Enjoy more space on the screen for your content with the Boost theme through the option of collapsing the main menu on every page.

For administrators, the settings block has now been transformed into a handy gear cog that displays all settings in a drop down menu. These gear cogs are displayed to administrators on the chat, courses and activities front pages.



Better navigation in Boost!

Get better navigation within and between courses in Boost. Users can now orient themselves easily by clicking on the key navigation points located at the top of every page or jump between courses and sections seamlessly via the flat navigation panel to the side of the screen.



Easily customise your Moodle site

Boost is based on the very latest version of the popular Bootstrap framework, meaning it's very easy to customise your Moodle site using industry standard Bootstrap designs.

Administrators are now able to easily customise the Boost theme with custom brand colours, logo, font and much more in Moodle 3.2.



Mobile ready

With Boost, Moodle is also aiming towards a unified experience with our Moodle Mobile App.

In Moodle 3.2, you always have the option to switch back to the familiar old interface at any time without affecting your custom themes.

The new release of Boost is just the beginning. Moodle HQ will continue to develop Boost next year in response user feedback.

To see how the new Boost core theme feature in Moodle 3.2 works, check out our step by step video at youtube.com/moodle

moodle 3.2

USER FRIENDLY

MESSAGING & NOTIFICATIONS



Choose how you want to be notified about **important events**

Via **email** or **mobile** notifications

Access your messages on **every page** of your Moodle site through the **message icon** in the navigation bar

Enjoy **easier** and **faster** communications with Moodle 3.2!



More features

Improved messaging and notifications feature in Moodle 3.2 means that communicating on your sites is faster, easier and fun to use.

Here are some of features that will make communications easier and faster in Moodle 3.2:



Talk in real time & find everything easily

You can now find a message and notifications icon on every page of your Moodle site with quick display of your recent and unread messages.

A full messaging interface that shows conversation in real time will also allow you to search for contacts, direct message, filter results by course

or name, upload media that will automatically resize to fit and overall, helps you find everything you need!



Choose how you want to be notified

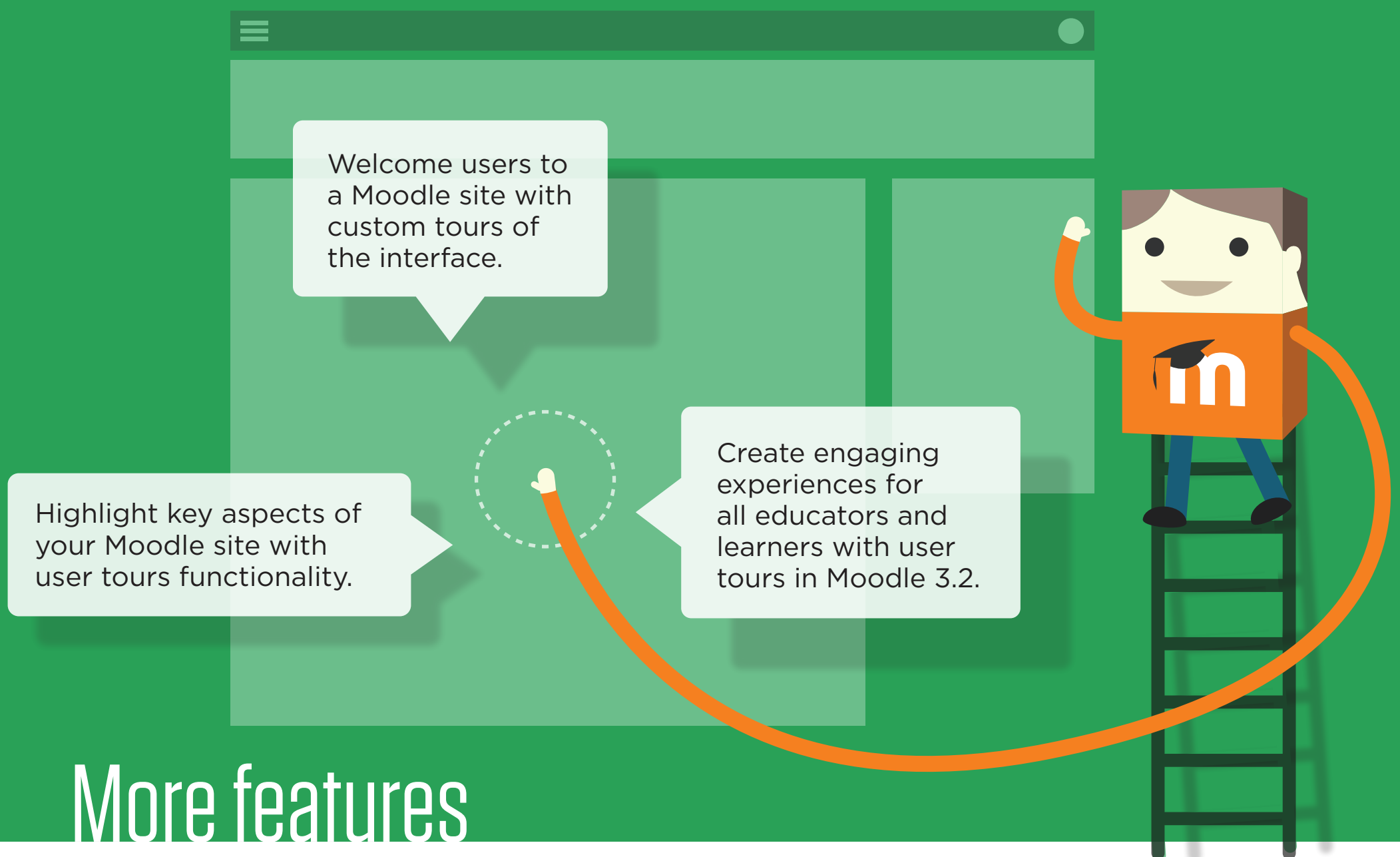
New settings now make it easy to customise exactly how you want to receive notifications – for example via email or direct to your mobile app.

To see how the new messaging and notifications feature in Moodle 3.2 works, check out our step by step video at youtube.com/moodle



CREATE AND SHARE

WALKTHROUGHS WITH USER TOURS



More features

A big new feature in Moodle 3.2 is user tours, which will allow administrators of a Moodle site to create and share walkthroughs with teachers, students and all users.



Create your own tours or use existing templates

Create custom tours, or use existing templates created by the Moodle community in various languages, to welcome users to your Moodle site, highlight key areas or showcase new features.

You can even target tours to certain pages, roles, or themes.

Now you can create and share walkthroughs with teachers and students with the user tours feature in Moodle 3.2.

Create engaging learning experiences with the user tours feature!

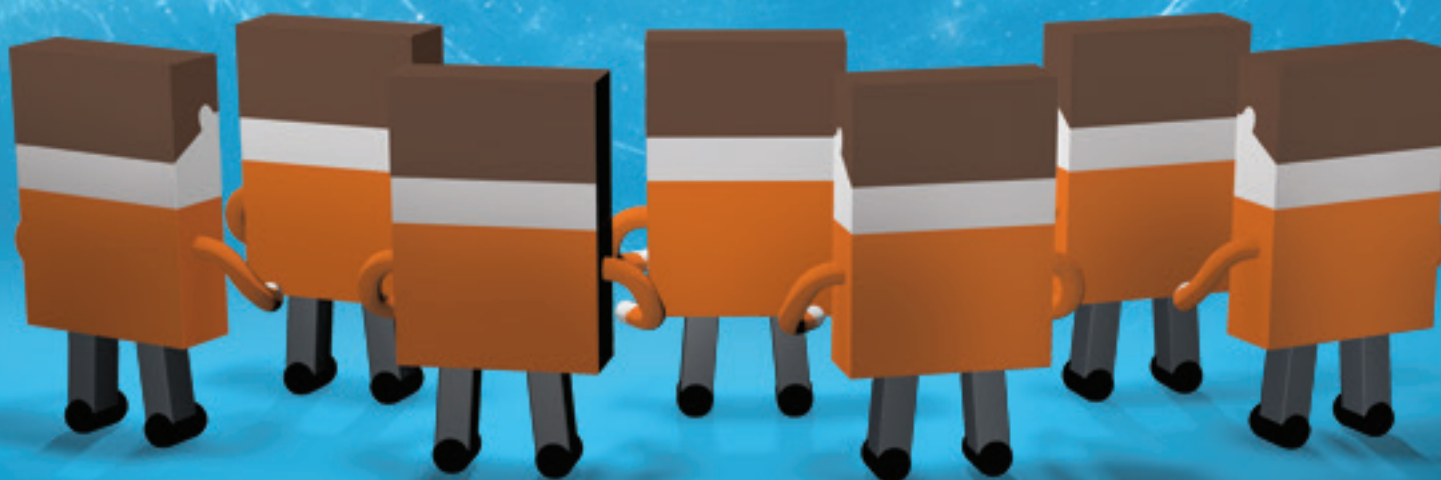
To see how the new user tours feature in Moodle 3.2 works, check out our step by step video at youtube.com/moodle



NEW MEDIA PLAYER PLUGIN



Moodle 3.2 now comes with a default industry-leading media player - Video.js - which provides industry-leading accessibility and usability for video and audio in your content.



More features



A bit of information on Video.js

Video.js is an open source HTML5 video player. It allows you to embed video and has a consistent look between all major browsers, including Firefox, Safari, Google Chrome, Opera, Internet Explorer 9. It's also compatible with many mobile and handheld devices like iPhone, iPad and Android.



Add other video players easily

Pluggable support has also been added so users can also add other new video players to their site easily.



Captions and subtitles

Video.js provides users with more accessible learning experiences through the full support for captions and subtitles for any audio and video files on your site.

Explore enhanced learning possibilities with an industry leading media player.

To see how the new Media Player feature in Moodle 3.2 works, check out our step by step video at youtube.com/moodle

NEW GRAPHS ON ALL REPORTS

Generate interactive and responsive charts with a brand new graph library in Moodle 3.2



More features

A new modern graphing library in Moodle 3.2 has been used to overhaul all the graphs and charts to make them prettier as well as more interactive and responsive.

These include things like grades, choice results, attendance, surveys and other reports.

Here are some of the exciting things you might want to know about your brand new graph library.



A bit about Chart.js

Chart.js has been chosen for the next generation graph API backend because of its clean-cut aesthetics and responsive scaling to screen size.



Improving accessibility

To improve accessibility, there is now the option of viewing graph information in a direct table format and the default graph colours have also been chosen for the best possible contrast.

To see how the new graphs feature in Moodle 3.2 works, check out our step by step video at youtube.com/moodle

LTI 2 COMPLIANCE



Moodle 3.2 is now compliant with LTI2 provider! This means that it is now easier to access content shared from Moodle 3.2 using LTI 2.

More features

LTI (Learning Tools Interoperability) is a specification developed by IMS Global Learning Consortium which provides a standard way of integrating rich learning applications with platforms like Moodle.

The LTI publishing tool was first seen in Moodle 3.1, allowing users to share their educational content across the globe. Improvements in Moodle 3.2 focus on simplifying the sharing and consuming capabilities for LTI tools.

Here are some important things to note about LTI2 in Moodle 3.2:



Handy information for your shared content

Cartridges have been implemented in Moodle 3.2, so that people interested in accessing your LTI tools will now know more about the content you've shared including handy information such as a title, icon and description.

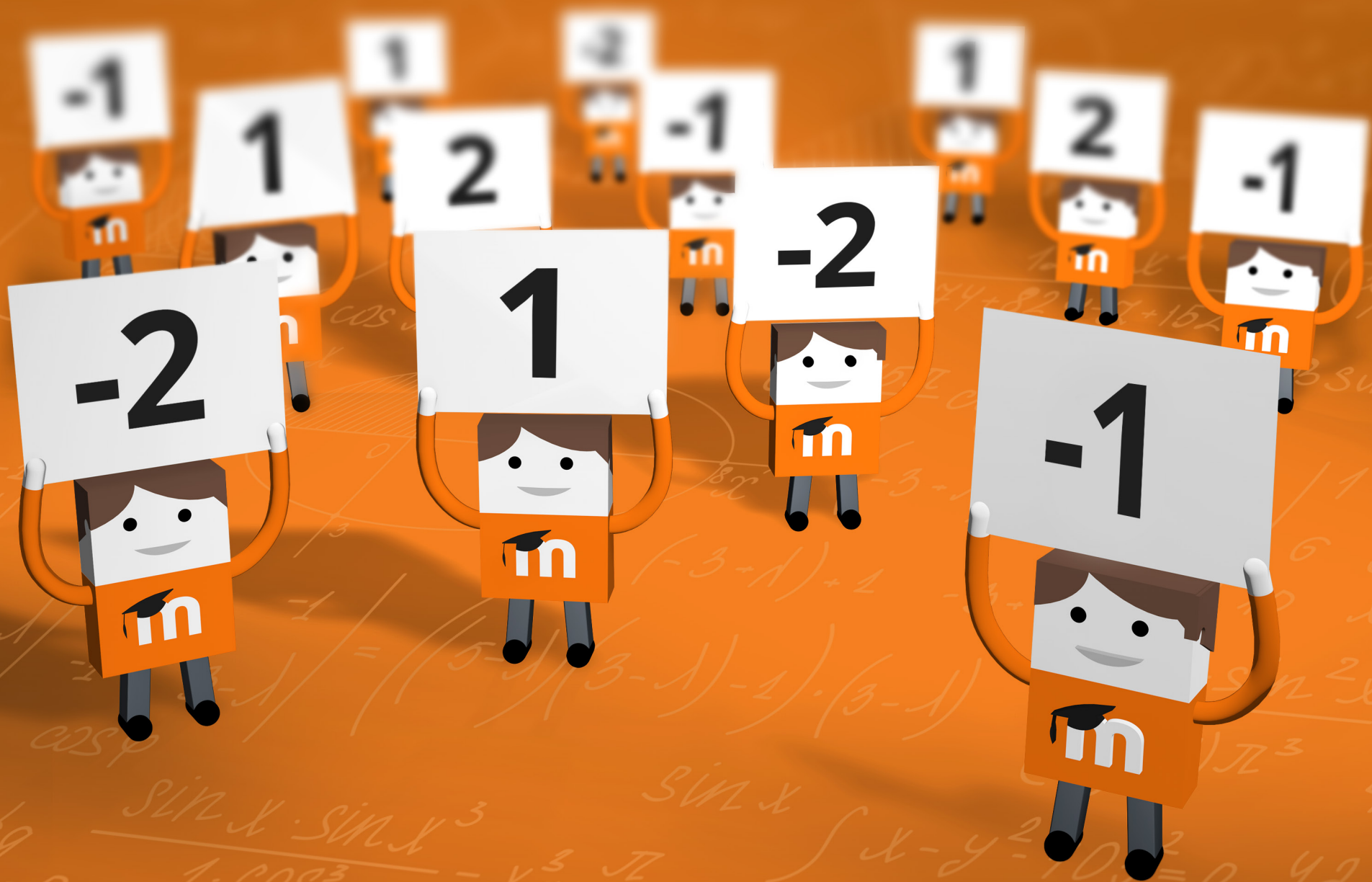


Customise LTI tools to your needs

There is also the exciting new addition of Content Item - a powerful tool that allows users to configure and customise LTI tools to their specific needs so they can get the most out of the tools they're accessing.

To see how the new LTI 2 compliance feature in Moodle 3.2 works, check out our step by step video at youtube.com/moodle

RUBRICS CALCULATIONS



More features

You've asked and we've listened - welcome to improved rubric marking improvements in Moodle 3.2.

Here are two improvements we think you'd want to know about:



Arbitrary scoring now available

Rubrics now handle arbitrary scoring including negative numbers.

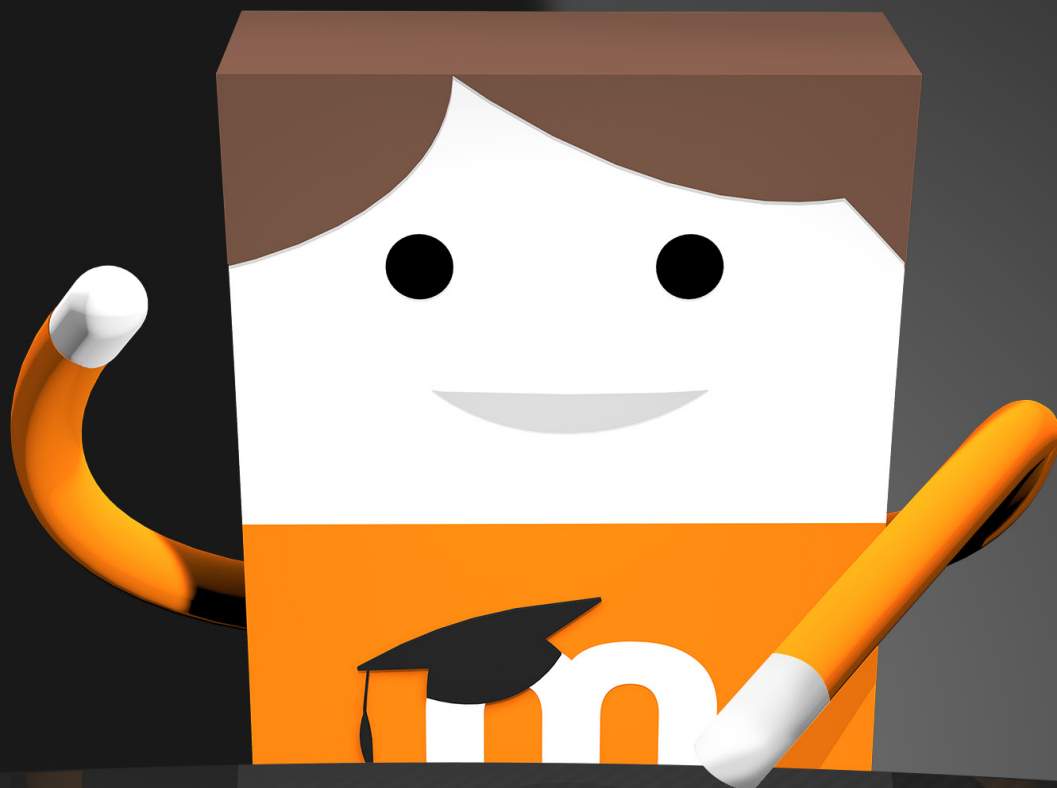


Simpler calculations method

Changes have also been made to the default grading calculation method, simplifying it and making it easy to use all forms of marking.

To see how the new Rubrics calculations feature in Moodle 3.2 works, check out our step by step video at youtube.com/moodle

COMPETENCY FRAMEWORKS



Ribbit
Academy

Glacier
University

Adams
College

Starfleet
University



Arbitrary scoring now available

Rubrics now handle arbitrary scoring including negative numbers.



Simpler calculations method

Changes have also been made to the default grading calculation method, simplifying it and making it easy to use all forms of marking.

View Moodle 3.2 release highlights at youtube.com/moodle